

The Watkins Building is located at 1936 Lyndale Avenue South in the heart of the Lowry-East (Wedge) neighborhood. The Watkins Building offers a range of creative spaces (office, creative office, retail, storage/warehouse, and production/assembly) from 2,500- 75,000 square feet with anticipated occupancy in the summer of 2023.

- Fully renovated building features will include:
 - Sandblasted wood & brick
 - Open Industrial finishes
 - Abundant natural light
- Updated common areas and tenant finishes
- Free Onsite parking available
- 11' - 18' clear heights

THE WATKINS BLDG.

For information regarding leasing or renovations at The Watkins Building, please contact:

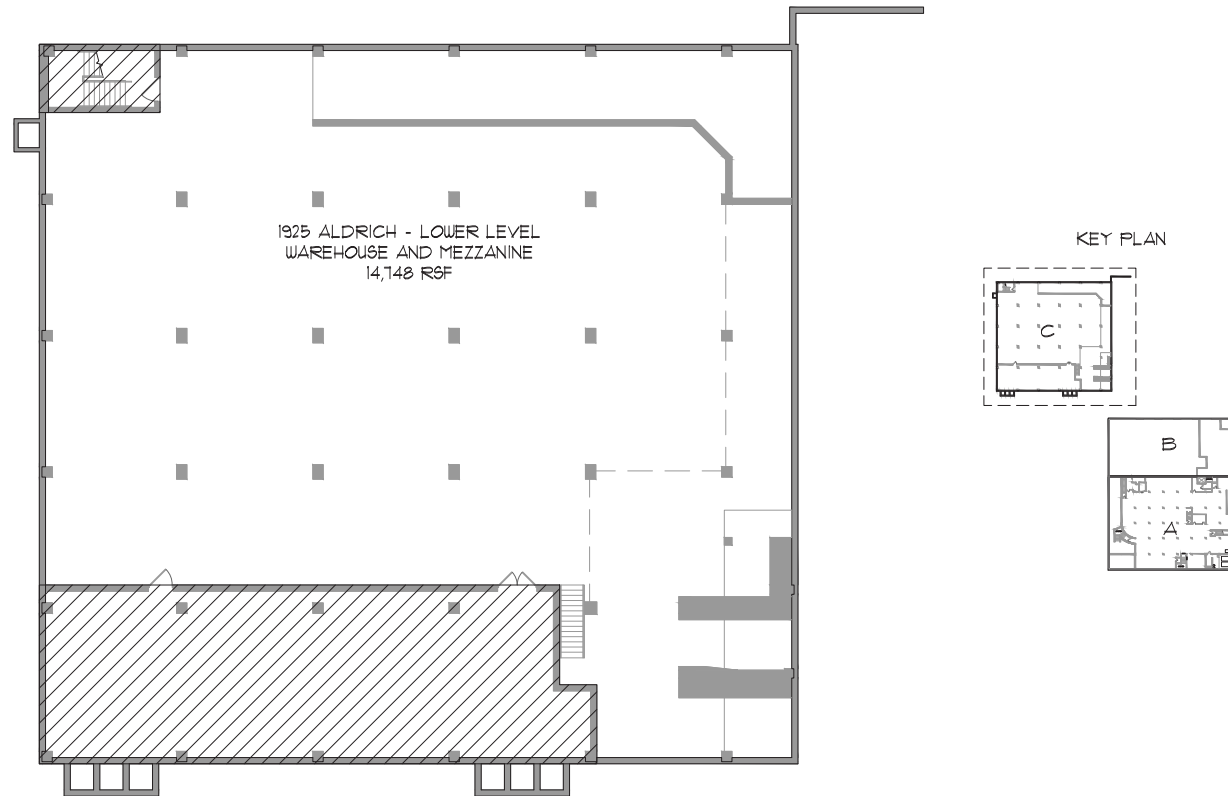
Joe Klein 612-623-2470

JoeK@hillcrestdevelopment.com

Charlie Nestor 612-623-2475

CharlieN@hillcrestdevelopment.com

thewatkinsmpls.com



The Watkins Building is located at 1936 Lyndale Avenue South in the heart of the Lowry-East (Wedge) neighborhood. The Watkins Building offers a range of creative spaces (office, creative office, retail, storage/warehouse, and production/assembly) from 2,500- 75,000 square feet with anticipated occupancy in the summer of 2023.

- Fully renovated building features will include:
 - Sandblasted wood & brick
 - Open Industrial finishes
 - Abundant natural light
- Updated common areas and tenant finishes
- Free Onsite parking available
- 11' - 18' clear heights

THE WATKINS BLDG.

For information regarding leasing or renovations at The Watkins Building, please contact:

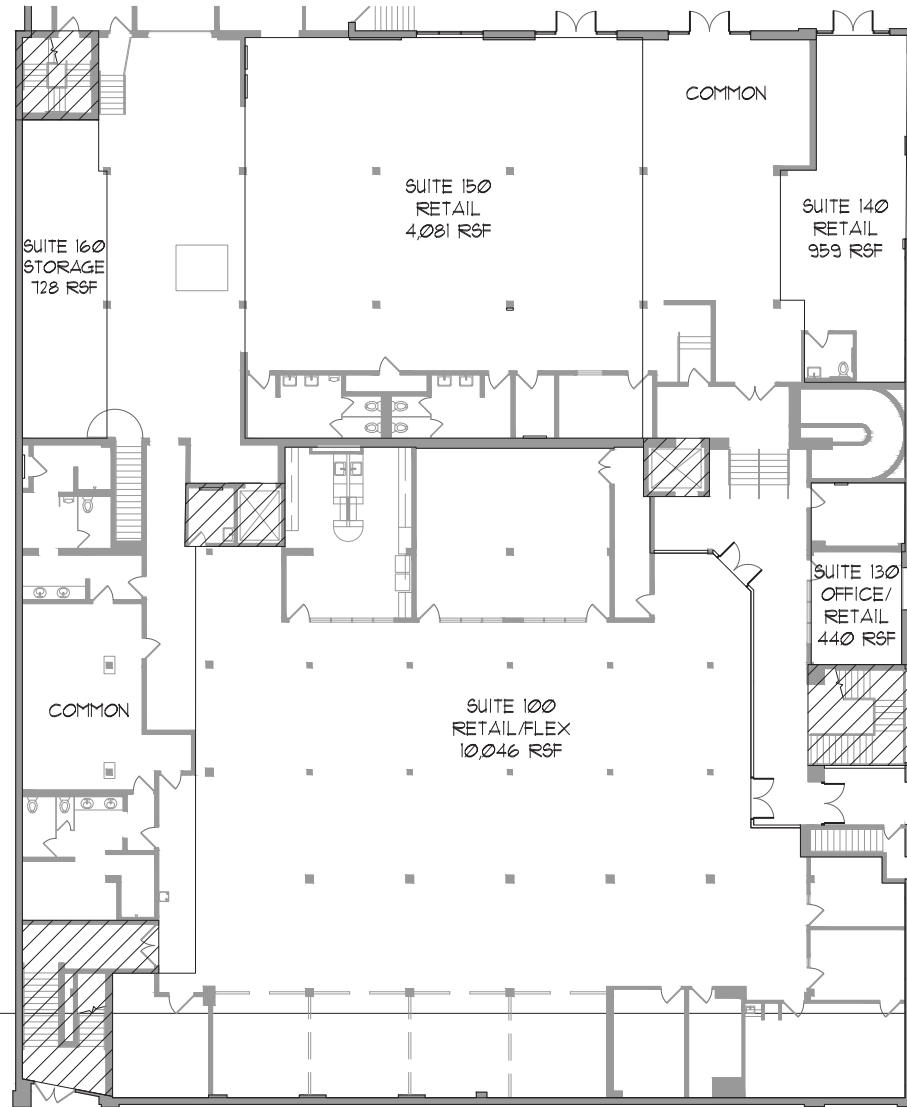
Joe Klein 612-623-2470

JoeK@hillcrestdevelopment.com

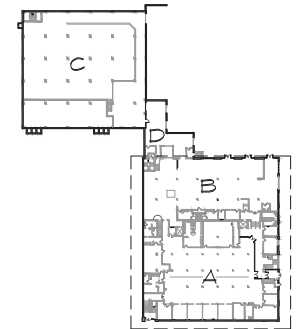
Charlie Nestor 612-623-2475

CharlieN@hillcrestdevelopment.com

thewatkinsmpls.com



KEY PLAN



The Watkins Building is located at 1936 Lyndale Avenue South in the heart of the Lowry-East (Wedge) neighborhood. The Watkins Building offers a range of creative spaces (office, creative office, retail, storage/warehouse, and production/assembly) from 2,500- 75,000 square feet with anticipated occupancy in the summer of 2023.

- Fully renovated building features will include:
 - Sandblasted wood & brick
 - Open Industrial finishes
 - Abundant natural light
- Updated common areas and tenant finishes
- Free Onsite parking available
- 11' - 18' clear heights

THE WATKINS BLDG.

For information regarding leasing or renovations at The Watkins Building, please contact:

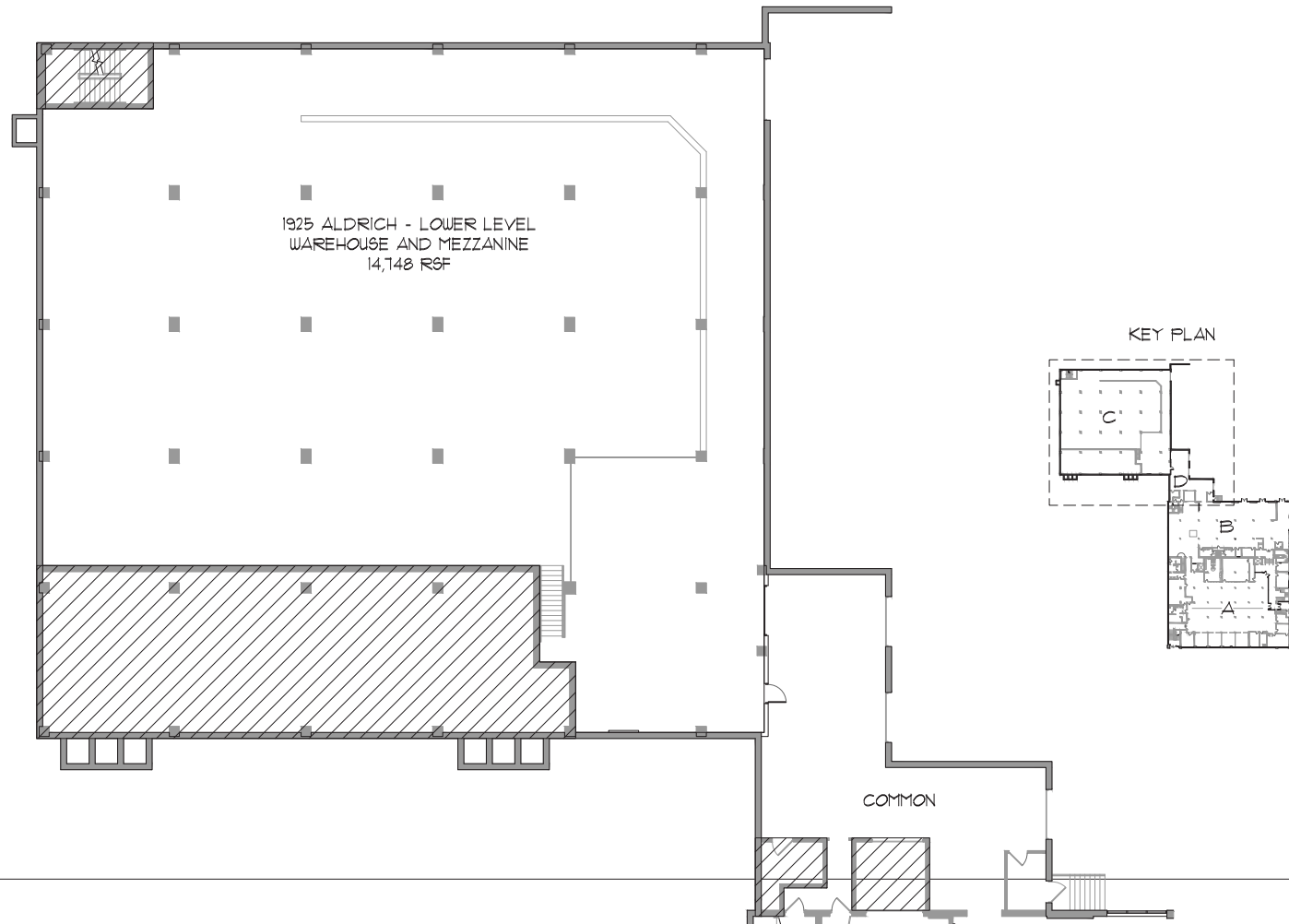
Joe Klein 612-623-2470

JoeK@hillcrestdevelopment.com

Charlie Nestor 612-623-2475

CharlieN@hillcrestdevelopment.com

thewatkinsmpls.com



The Watkins Building is located at 1936 Lyndale Avenue South in the heart of the Lowry-East (Wedge) neighborhood. The Watkins Building offers a range of creative spaces (office, creative office, retail, storage/warehouse, and production/assembly) from 2,500- 75,000 square feet with anticipated occupancy in the summer of 2023.

- Fully renovated building features will include:
 - Sandblasted wood & brick
 - Open Industrial finishes
 - Abundant natural light
- Updated common areas and tenant finishes
- Free Onsite parking available
- 11' - 18' clear heights

THE WATKINS BLDG.

For information regarding leasing or renovations at The Watkins Building, please contact:

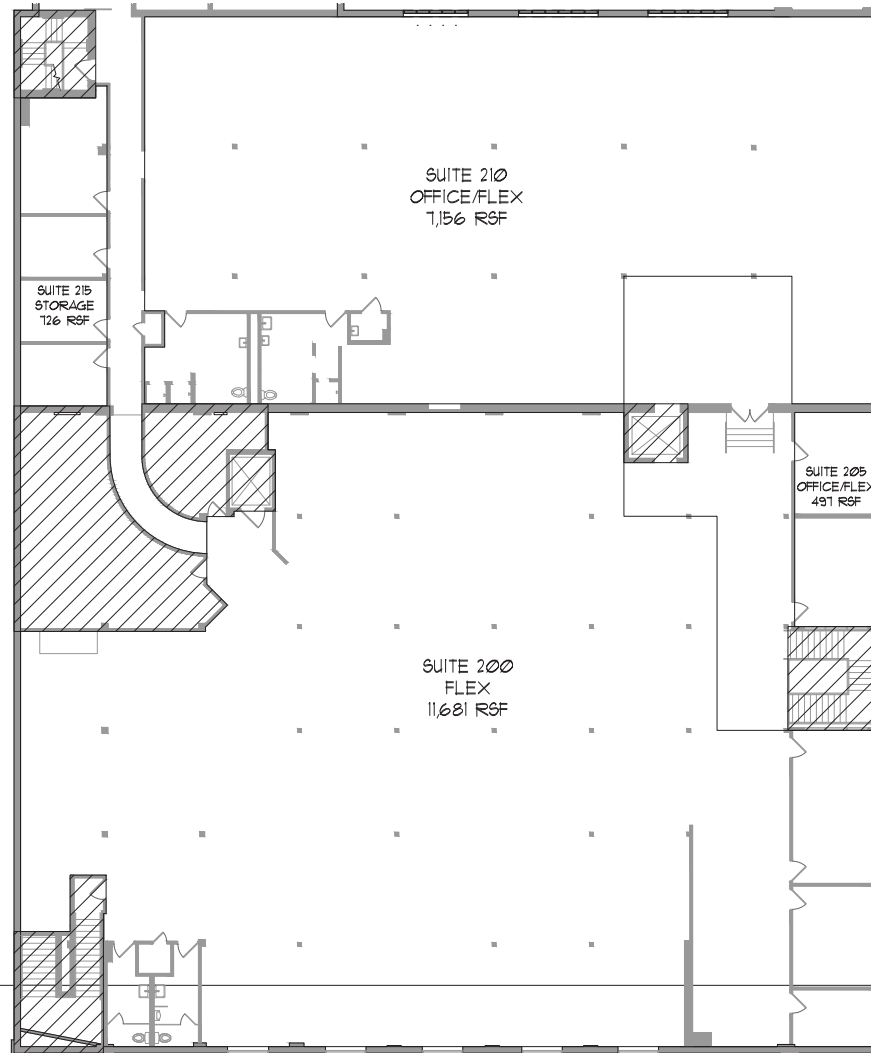
Joe Klein 612-623-2470

JoeK@hillcrestdevelopment.com

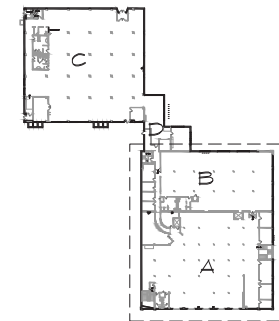
Charlie Nestor 612-623-2475

CharlieN@hillcrestdevelopment.com

thewatkinsmpls.com



KEY PLAN



The Watkins Building is located at 1936 Lyndale Avenue South in the heart of the Lowry-East (Wedge) neighborhood. The Watkins Building offers a range of creative spaces (office, creative office, retail, storage/warehouse, and production/assembly) from 2,500- 75,000 square feet with anticipated occupancy in the summer of 2023.

- Fully renovated building features will include:
 - Sandblasted wood & brick
 - Open Industrial finishes
 - Abundant natural light
- Updated common areas and tenant finishes
- Free Onsite parking available
- 11' - 18' clear heights

THE WATKINS BLDG.

For information regarding leasing or renovations at The Watkins Building, please contact:

Joe Klein 612-623-2470

JoeK@hillcrestdevelopment.com

Charlie Nestor 612-623-2475

CharlieN@hillcrestdevelopment.com

thewatkinsmpls.com

