

Freshly renovated, offering creative office/flex spaces
at the gateway of South Minneapolis adjacent to I-94 & I-35W.
Offers free onsite parking and proximity to bus service.

www.thewatkinsmpls.com

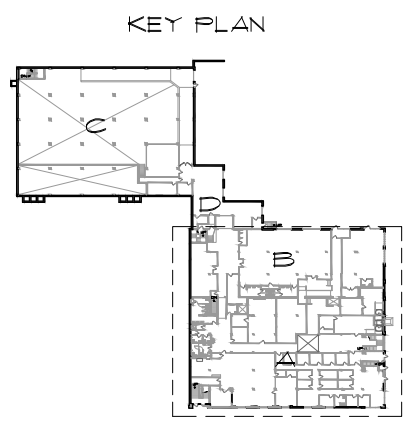
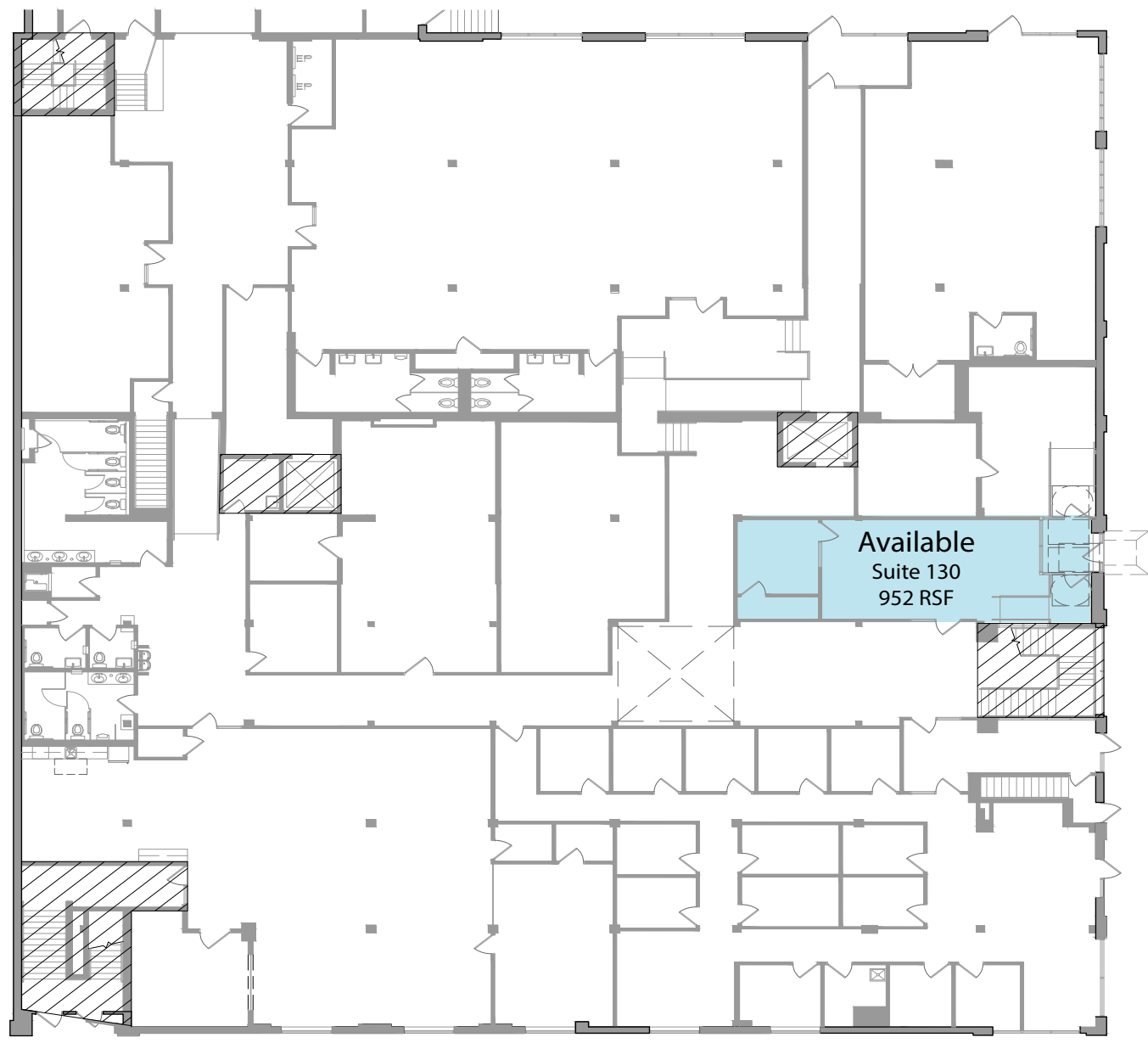
THE WATKINS BLDG.

For information regarding leasing or renovations at
Watkins, please contact:

Charlie Nestor 612-623-2475
CharlieN@hillcrestdevelopment.com

Emily Claridge 612-623-2485
EmilyC@hillcrestdevelopment.com

Joe Klein 612-623-2470
JoeK@hillcrestdevelopment.com



The Watkins Building

1936 Lyndale Ave S
Minneapolis, MN 55403

1936 Lyndale Ave. S - The Watkins Bldg. - First Floor

Freshly renovated, offering creative office/flex spaces
at the gateway of South Minneapolis adjacent to I-94 & I-35W.
Offers free onsite parking and proximity to bus service.

www.thewatkinsmpls.com

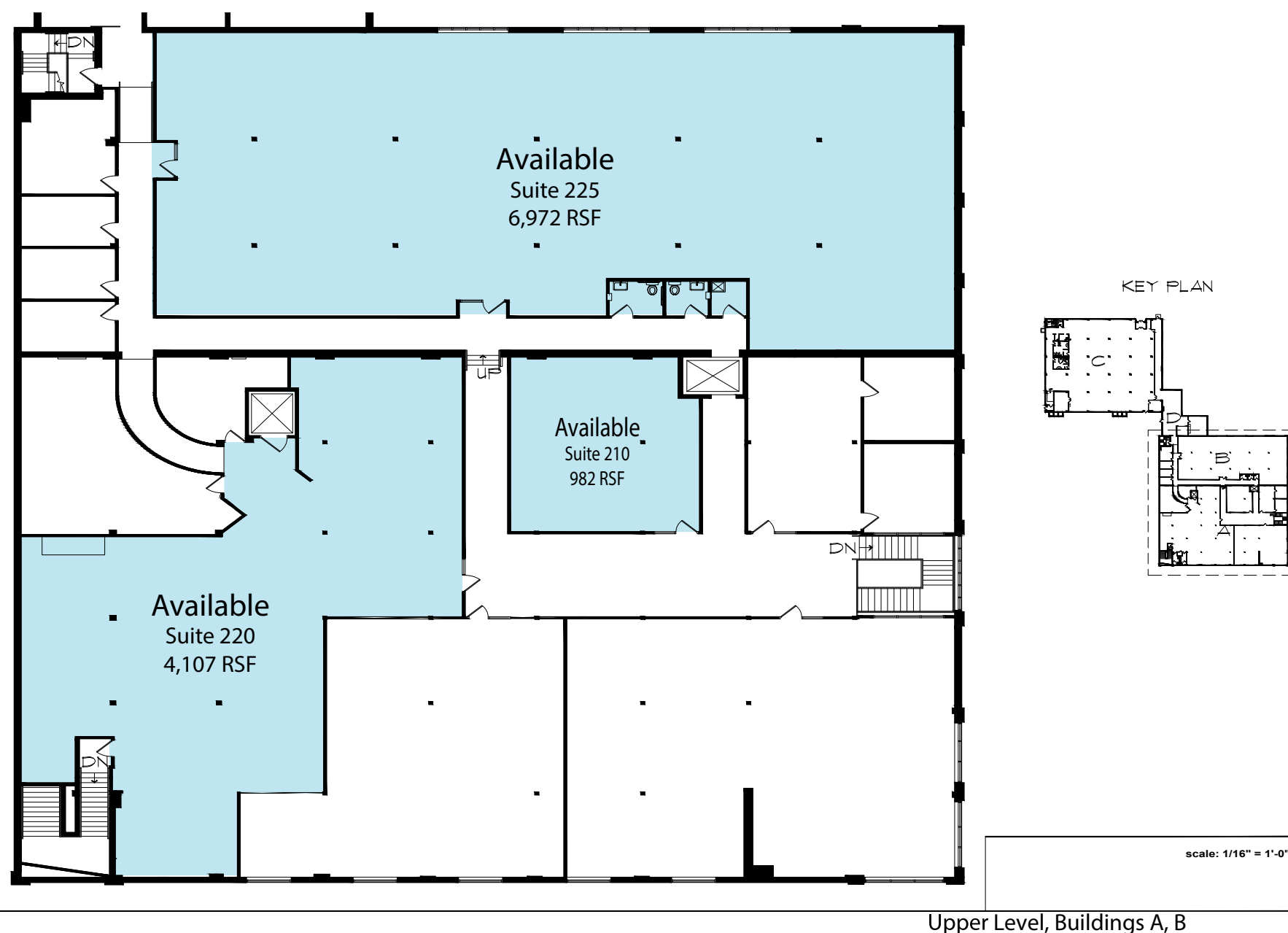
THE WATKINS BLDG.

For information regarding leasing or renovations at
Watkins, please contact:

Charlie Nestor 612-623-2475
CharlieN@hillcrestdevelopment.com

Emily Claridge 612-623-2485
EmilyC@hillcrestdevelopment.com

Joe Klein 612-623-2470
JoeK@hillcrestdevelopment.com



1936 Lyndale Ave. S - The Watkins Bldg. - Second Floor

Freshly renovated, offering creative office/flex spaces
at the gateway of South Minneapolis adjacent to I-94 & I-35W.
Offers free onsite parking and proximity to bus service.

www.thewatkinsmpls.com

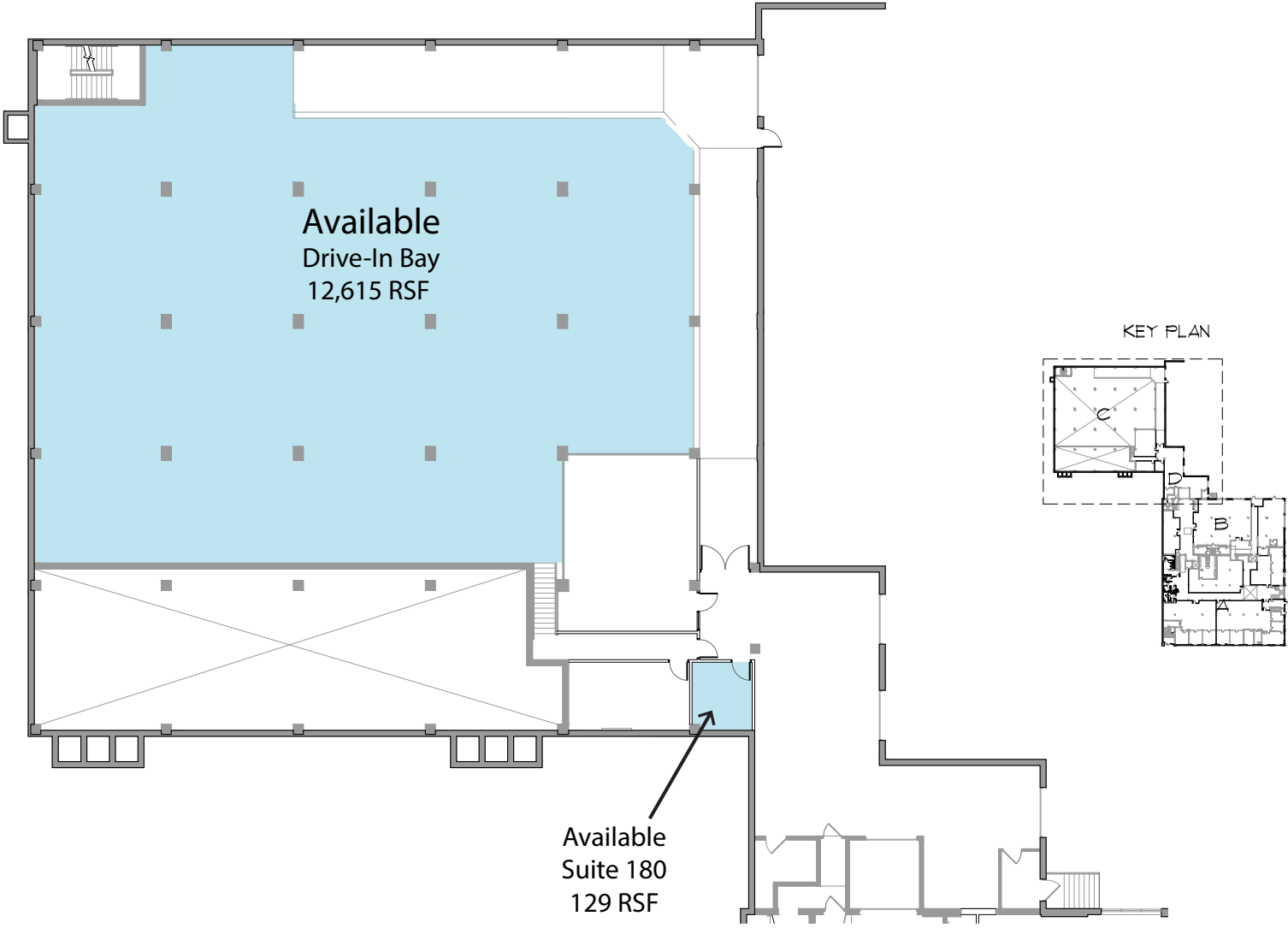
THE WATKINS BLDG.

For information regarding leasing or renovations at
Watkins, please contact:

Charlie Nestor 612-623-2475
CharlieN@hillcrestdevelopment.com

Emily Claridge 612-623-2485
EmilyC@hillcrestdevelopment.com

Joe Klein 612-623-2470
JoeK@hillcrestdevelopment.com



Main Level, Buildings C, D

1936 Lyndale Ave. S - The Watkins Bldg. - First Floor

Freshly renovated, offering creative office/flex spaces
at the gateway of South Minneapolis adjacent to I-94 & I-35W.
Offers free onsite parking and proximity to bus service.

www.thewatkinsmpls.com

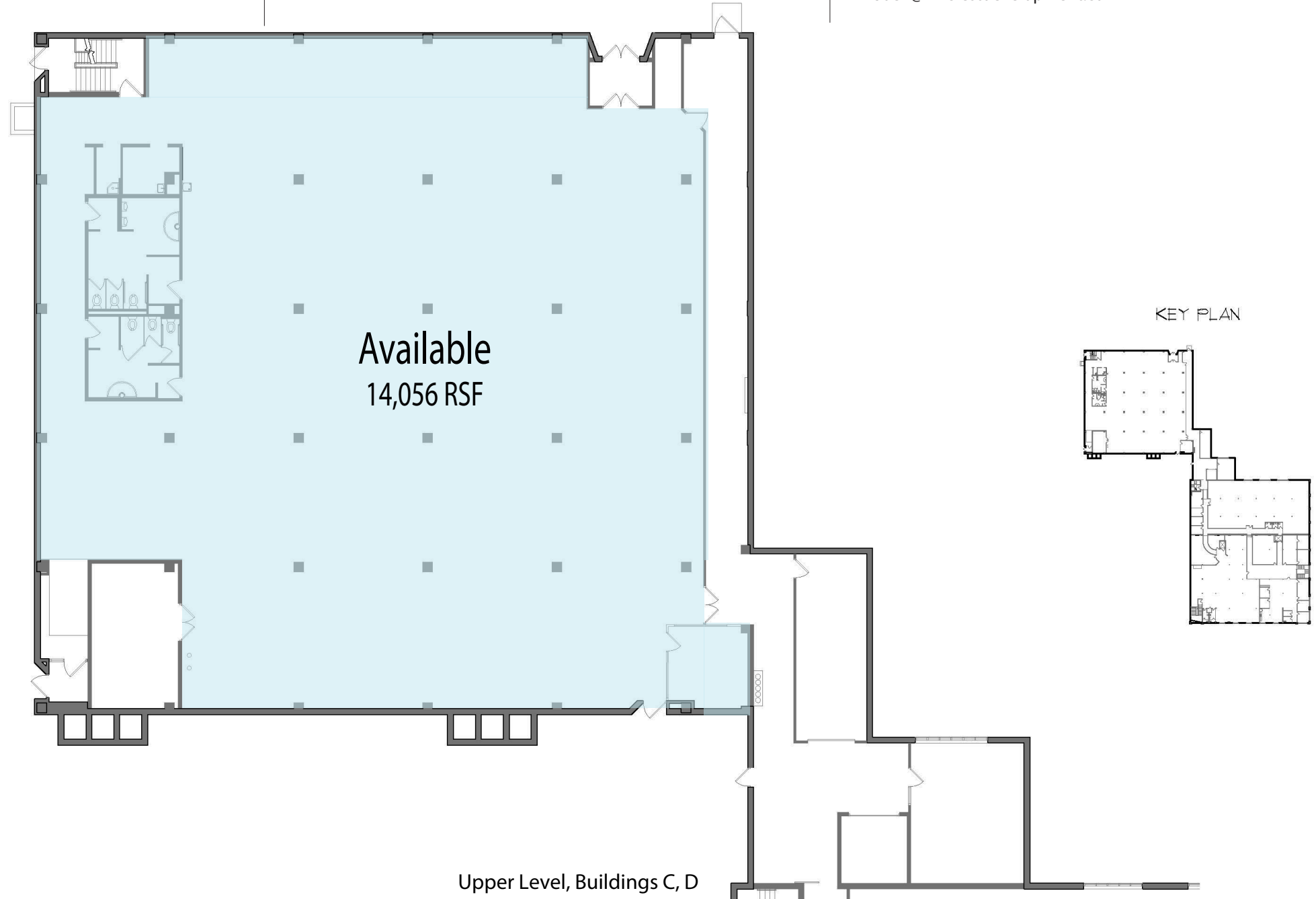
THE WATKINS BLDG.

For information regarding leasing or renovations at
Watkins, please contact:

Charlie Nestor 612-623-2475
CharlieN@hillcrestdevelopment.com

Emily Claridge 612-623-2485
EmilyC@hillcrestdevelopment.com

Joe Klein 612-623-2470
JoeK@hillcrestdevelopment.com



1936 Lyndale Ave. S - The Watkins Bldg. - Second Floor